

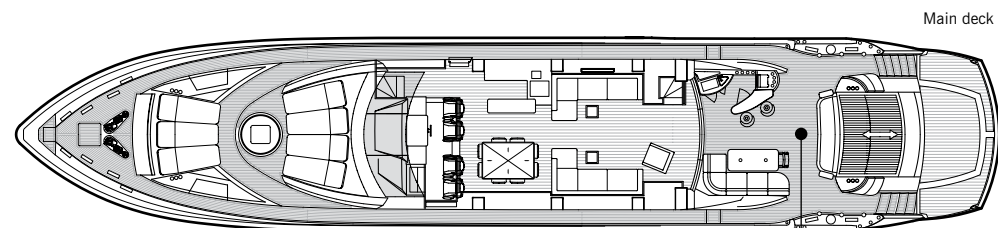
PREDATOR 108

STYLE: PERFORMANCE YACHT

ACCOMMODATION: UP TO 8 GUESTS AND 4 CREW MEMBERS

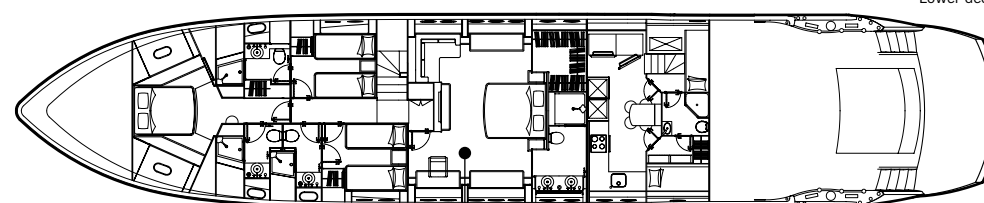
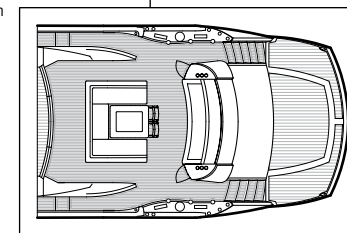
PERFORMANCE: UP TO 42 KNOTS

EXEMPLIFYING THE PREDATOR PRINCIPLE OF NARROWER HULL FORM FOR HIGHER SPEEDS AND AGILITY, THE PREDATOR 108 CAN RIGHTLY BE VIEWED AS EXTREME. THE RAKISH, MINIMAL SUPERSTRUCTURE AND ARROW-HEAD FOREDECK ARRANGEMENT ALL EXPRESS INHERENT HIGH PERFORMANCE, PROVEN WITH 42 KNOTS ACHIEVED WITH THE 7300 PS, TRIPLE ARNESON SURFACE DRIVE OPTION. BUT EXTREME HAS MORE THAN ONE MEANING: ON THE PREDATOR 108 CREATURE COMFORTS ARE STILL AS HIGH A PRIORITY AS PACE. THE SPECIFICATION IS HIGH AND THERE ARE OPTIONAL LAYOUT ARRANGEMENTS INCLUDING A SECOND PRIVATE SALOON BELOW. SO EXTREME, YES. BUT SPARTAN, NO. HEDONISTIC? ASK YOURSELF.



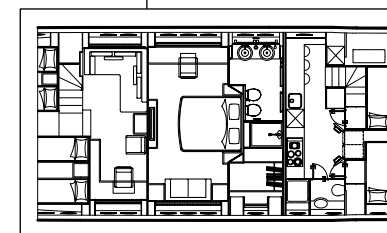
Main deck

Cockpit option



Lower deck

Lower deck option



PRINCIPAL CHARACTERISTICS

Length overall – (incl. pulpit and platform)	32.90m	108'0"
Length waterline	24.34m	79'10"
Beam – (maximum)	6.30m	20'8"
Fuel capacity	11000 litres	2420 GB gal. 2906 US gal.
Fresh-water capacity – (incl. hot water tanks)	1800 litres	396 GB gal. 476 US gal.
Grey-water capacity	500 litres	110 GB gal. 132 US gal.
Black-water capacity	500 litres	110 GB gal. 132 US gal.
Propulsion	Direct gear drive through triple Arneson surface drives, or submerged twin props in semi-tunnels	
Generators	2 x 32kW @ 50Hz (Euro) 2 x 40kW @ 60Hz (US)	
Fuel options	Diesel	

Twin shaft option		
Displacement – (@ half load)	70500kg	155400lb
Engine option	up to 4800hp (total)	
Top speed	32 knots*	
Range	up to 450 nautical miles* (subject to speed)	
Triple Arneson option		
Displacement – (@ half load)	76000kg	167600lb
Engine option	up to 7300hp (total)	
Top speed	42 knots*	
Range	up to 450 nautical miles* (subject to speed)	

All principal characteristics and specifications are provisional.



PREDATOR 108

GENERAL CONSTRUCTION

Built to RINA Pleasure Craft Rules

Built to European Specification, 380v 3 phase 50Hz giving a single phase of 220v

or

Built to USCG Regulations and Specification, 208v 3 phase 60Hz giving a single phase of 110v

STANDARD SPECIFICATIONS

1 Construction

Hull and deck:

Gel coat including stripes
Vinylester skin coat with powder bound mat
Stitched multi-axial single skin hull bottom
Balsa/PVC foam cored topsides – skinned with stitched multi-axials
PVC foam cored deck
Longitudinally stiffened with foam formers over-laminated with stitched multi-axials
Transversely stiffened with GRP ringframes, marine ply and sandwich bulkheads

Superstructure:

Gel coat
PVC foam cored and skinned with stitched multi-axials
Stiffened with foam formers over-laminated with stitched multi-axials

2 Deck

Bulwark access doors on port and starboard sides
2 x electric (3 phase) anchor windlasses with hand control
2 x hawsers with roller, chain stoppers and devil's claw
2 x stokes hhr anchors (galvanised, 113kg each)
2 x chain (galvanised) for anchors. 1 x 80m and 1 x 110m (14mm diameter)
12 x stainless steel cleats
Fairleads bow and stern, port and starboard
Manual anchor and chain sea water wash down
Fresh-water deck wash with outlets forward and aft
Pulpit and handrails with stainless steel stanchions
Safety glass side windows and windscreen with stainless steel trims
Starboard sidedeck door
Teak laid side decks
Low-level lighting around side decks
2 x boat hooks (3 metres)
2 x life-rings
10 x fenders
Foredeck sunbathing area
Spa tub (fresh-water) with GRP lid
4 x marine speakers connected to CD/radio in deck saloon
Seat and small locker and bow
Storage lockers port and starboard
Cool chest beside foredeck sunbathing area
Remote control spotlight on bow
Simrad RS87 intercom speaker in forepeak locker
Fire hydrant outlet forward
Fuel shut off point
2 x electric stern (3 phase) capstans
Twin horn cluster

3 Aft cockpit and bathing platform

Table and seating
3 x directors chairs
CCTV cameras on port and starboard sides
Overhead lighting
Low level lighting
4 x marine speakers connected to CD/radio in deck saloon
4 x stainless steel cleats and fairleads in the aft cockpit
Wetbar with sink
Ceramic griddle in wetbar
Cool chest in wetbar
Ice maker in wetbar
2 x cockpit stern gates
Fire extinguisher in wetbar locker
Portable engines and thrusters remote control on lead (1 of 2)
Hydraulic gangway (6m)
Stern garage with power operated door
Watertight hatch to engine room
Fire hydrant outlet aft
Retractable sunpad aft
2 x 8 man liferafts with stowage under sunpad (non SOLAS approved)
Stairs each side to bathing platform
Teak laid cockpit sole and stairs to platform
Teak laid fixed bathing platform
Manual bathing ladder with sockets on port and starboard sides
Hot and cold water handheld swimming shower
Locker with dockside water connection and deck wash in the stern
Locker with dockside TV and telephone connections
Electrical shorepower connection at stern
2 x pop-up cleats on platform for tying fenders
VHF handset (Simrad RS87) (2 of 3) in aft locker
Emergency steering point in aft locker
Retractable canopy
Forward sliding doors in stainless steel and safety glass leading to deck saloon

4 Stern garage

Power operated door
Deck wash outlet
DC lighting (IP rated)
Electric winch with controls
AC and DC outlets in waterproof enclosures (fitted with double pole isolation outside the space)
Natural ventilation air in, forced air out (with a minimum of six air changes an hour)
Two gas detectors with alarm indication at helm
Tender launch and recovery crane for standard fixed platform

1. Dining area – main deck saloon
2. Access to side deck
3. The Predator 108 at speed
4. The Predator 108 at anchor
5. The dramatic lines of the Predator 108
- 6 . Drive station

4

5

6

5 Main deck saloon

Aft sliding doors in stainless steel and safety glass with eyelet style curtain
Staircase leading to crew quarters
Staircase forward leading to guest accommodation
Sliding hardtop roof
Sofas on port and starboard sides
Two low level tables
Wide planked (100mm) teak flooring
Side windows with electric Venetian blinds
Halogen overhead lighting
AC Sockets
Telephone points (1 forward beside bar and 1 aft port side)
Air-conditioning
Fire extinguisher in storage locker
Flatscreen TV (42") on rise and fall
Surround sound system with radio, CD and DVD
iPod docking station connected to surround sound system
Bar with ice maker, fridge and sink with hot and cold water
Cocktail cabinet with glassware stowage for 10 (Champagne, whisky, wine and long glasses)
Bottle stowage
Dining table
8 x free-standing dining chairs
Starboard side deck door (manual with lock)
Plug-in point for portable engine control beside side deck door (2 of 2)

6 Helm position

Adjustable pilot and co-pilot seats with electric movement control
MTU main engines control
Engine instrumentation (analogue)
MTU Blue Line displays (1 for each engine)
Exhaust temperature indication
Trim tab controls
Rudder angle indicator (twin engine option)
Drive indicators and controls (triple engine option)
Bow and stern thruster control
CCTV monitoring and control
Manual compass
Furuno NavNet radar/chartplotter with GPS (2 x colour displays)
Depth and speed displays (Simrad IS20)
Autopilot (Simrad AP28)
VHF handset (Simrad RS87) (1 of 3) stations and 2 intercom points
Fuel level gauge
Fresh-water level gauge
Monitoring of boat systems
Windscreen wipers with glass washing system
Demisting fans for windscreen
Searchlight control
Telephone point
Fire extinguisher in storage locker
Air-conditioning
Chart stowage and chart light
Teak floor (wide planked)

7 Lower deck lobby

Stairs leading down from main deck to lower deck lobby
Fitted carpet
Halogen overhead lighting
Doors leading off to guest accommodation cabins and day head

8 Master aft stateroom

Double berth with sprung mattress, pillows and bedspread
Fitted carpet
Reading lights
Flatscreen television (42")
Hi-fi surround system with radio, CD and DVD
Two seater settee
Vertical portlights with removable storm shutters and roman blinds
Dressing table with low back chair
Mini bar fridge
Glassware with stowage (2 x Champagne, 2 x highball and 2 x tumbler)
Storage cabinets and drawers
Halogen overhead lighting
Air-conditioning
Telephone points (desk and bedside table)
AC sockets
Fire extinguisher in storage locker
Door to en suite and walk-in wardrobe

9 Master stateroom walk in wardrobe

Hanging rails
Safe deposit box (12" door, digital combination and metal box)
Halogen overhead lighting
AC double socket
Full-length mirror on inside of door
Low-level drawers
Fitted carpet
Fire extinguisher
Opening tempered glass port light with Roman blind, fitted with portable storm shutter
Door to stateroom

10 Master stateroom en suite

Tecma toilet 24V
Bidet
2 x washbasins and granite counter top
Granite flooring
Mirrors
Shower cubicle with glass door
Opening tempered glass port light with Venetian blind, fitted with portable storm shutter
Storage lockers
Razor socket
Extractor fan
Air-conditioning outlet
Halogen overhead lighting
Complete set of accessories
Door to stateroom

11 Forward VIP stateroom

Double berth with sprung mattress, pillows and bedspread
Fitted carpet
Wardrobe
Safe deposit box (two-brick with digital combination)
Reading lights
LCD flatscreen television (32")
Hi-fi surround sound system with radio, CD and DVD
Tempered glass portlights with Roman blinds, fitted with portable storm shutter
Dressing table with stool
Mirrors
Telephone points (beside desk and bedside)
AC sockets
Halogen overhead lighting
Fire extinguisher located in wardrobe
Air-conditioning
Door to en suite bathroom

12 Forward VIP en suite

Tecma toilet 24V
Lockers and shelves
Mirror
Washbasin and granite counter top
Granite flooring
Shower cubicle with glass door
Razor socket
Extractor fan
Air-conditioning outlet
Halogen overhead lighting
Complete set of accessories
Tempered glass porthole with Venetian blind, fitted with portable storm shutter
Door to stateroom

13 Port guest cabin

Two single berths with sprung mattresses, pillows and bedcovers
Wardrobe with mirrored door
Fitted carpet
Beside cabinet with drawer
Reading lights
Overhead halogen lighting
LCD television (19")
CD/DVD with two speakers
Tempered glass portholes with Roman blind, fitted with portable storm shutter
Storage under berths
Telephone point (bedside table)
AC sockets
Air-conditioning
Fire extinguisher located in wardrobe
Door to en suite

14 Port guest en suite and day head

Tecma toilet 24V
Granite counter top
Granite flooring
Lockers and shelves
Washbasin
Mirrors
Shower cubicle with glass door
Tempered glass porthole with Venetian blind, fitted with portable storm shutter
Razor socket
Extractor fan
Air-conditioning outlet
Complete set of accessories
Halogen overhead lighting
Doors to lobby and port guest cabin

15 Starboard guest cabin

Two single berths with sprung mattresses, pillows and bedcovers
Wardrobe with mirrored door
Beside cabinet with drawer
Fitted carpet
Reading lights
Halogen overhead lighting
LCD flatscreen television (19")
CD/DVD with two loudspeakers
Tempered glass portholes with Roman blind, fitted with portable storm shutter
Storage under berths
Telephone point (bedside table)
AC sockets
Fire extinguisher located in wardrobe
Air-conditioning
Door to en suite

16 Starboard guest en suite

Tecma toilet 24V
Granite counter top
Granite flooring
Lockers and shelves
Washbasin
Mirrors
Shower with glass door
Tempered glass porthole with Venetian blind, fitted with portable storm shutter
Razor socket
Extractor fan
Air-conditioning outlet
Complete set of accessories
Halogen overhead lighting
Door to starboard guest cabin

17 Galley and crew mess

Separate staircase leading from deck saloon to crew quarters
Granite work counter with sink and draining area
Ceramic electric four ring hob with removable pan holder
Extractor fan (ducted externally, with ventilation shut down outside the space)
Coffee maker (free standing)
Electric oven
Microwave
Telephone point
American style fridge/freezer/icemaker
Dishwasher (full size)
Waste disposal under sink unit
Washing machine
Tumble dryer (vented)
Cabinets and overhead lockers
Tempered glass porthole and Venetian blind, fitted with portable storm shutter
Fire blanket
Fire extinguisher located in storage locker
Halogen overhead lighting
Air-conditioning
AC sockets
Telephone point (beside crew dining area)
Breakfast bar with stools
Cutlery with storage for 12
Chinaware with storage for 12
LCD flatscreen television (19")
CD/DVD with two speakers
VHF handset (Simrad RS87) (3 of 3)
Simrad IS20 multiview display
Doors leading to crew cabins

18 Starboard crew cabin

Twin bunk berths with foam mattresses, pillow and bedcover
Wardrobe
Beside reading lights
Fitted carpet
AC socket
CD/radio and 2 speakers
Telephone point
Tempered glass porthole and curtains, fitted with portable storm shutter
Halogen overhead lighting
Fire extinguisher in wardrobe
Air-conditioning
Door to galley and mess

19 Port crew cabin

Twin bunk berths with foam mattresses, pillow and bedcover
Beside reading lights
Wardrobe
Fitted carpet
AC socket
CD/Radio and 2 speakers
Telephone point
Tempered glass porthole with curtains, fitted with portable storm shutter
Halogen overhead lighting
Fire extinguisher located in wardrobe
Air-conditioning
Door to galley

20 Crew toilet and shower

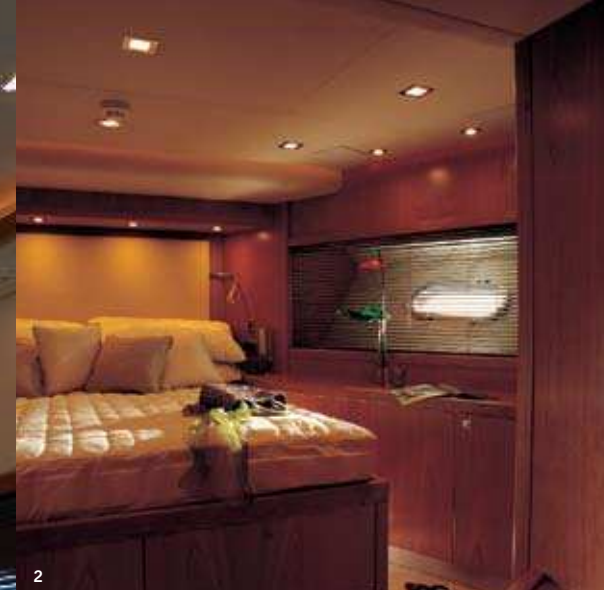
Tecma toilet 24V
Storage locker
Shower cubicle
Washbasin
Extractor fan
Halogen overhead lighting
Doors to crew cabins

21 Engine room

Hydraulic power steering and trim (pumps driven by two gearboxes)
Hydraulic bow and stern thrusters, pump driven by one gearbox
Steering hydraulic control unit
Auxiliary hydraulic control unit
Passerelle hydraulic control unit
1 x water maker (183 litres/48 US gal per hour)
Emergency steering
Oil exchange system
Air intakes fitted with mist eliminator system and emergency shut down flaps (manually operated)
Air extraction fans (AC) fitted with butterfly shutdown dampers (connected to fire system)
Temperature sensor on exhaust jackets
Inspection lamp
Toolbox
Fluorescent lights (AC)
Emergency lighting (DC)
Telephone point
Simrad RS87 intercom speaker
2 x fire alarm systems
Engine control system panels
Fire extinguishing system (FM200)
CCTV camera
AC/DC electrical outlets (double AC and 1 x 24v outlet)
Power management system panel
Maglite torch
Hand bilge pump
Automatic submersible bilge pumps
Fire pump
Hydraulic cooling pumps
Portable CO₂ fire extinguisher
2 x fire buckets with lines
Axe



1



2



3

1. Main deck saloon looking aft
2. Forward stateroom
3. Forward sun deck and spa tub

22 Generators

European specification only:

Generators 2 x 32kW @ 50Hz

USA specification only:

Generators 2 x 40kW @ 60Hz

Semi automatic control of generators and distribution system

Full manual back-up operation of generators, shore

power selection and sub board feeder selection

Generators to have 24v starting batteries

Water separating silencers

23 Fuel system

Duplex fuel filters to main engines (Racor)

Fuel filters to generators (Racor)

Integral GRP fuel tank

Manual fuel shut-off valves (operable from outside engine room)

Fuel shut-off valves on tank (local and remote operation)

Warning light at fuel filling point indicating tanks @ 90%

24 Bilge and fire main system

1 x automatic submersible bilge pump in each

watertight compartment (rule 3700 GPH)

1 x automatic submersible bilge pump aft

accommodation, port and starboard (rule 1500 GPH)

Strum box in each watertight compartment (bilge) and

seawater inlet in engine room (fire main) connected

via manifold (with shut off valves for operation) to:

1 x mechanical pump AC

1 x engine driven bilge pump

Discharging overboard (bilge) or to the fire hydrants

(port aft and forward starboard) and anchor chain wash (fire)

Non-return valves fitted to manifold to prevent bilge

water passing between compartments

Engine room automatic submersible bile pump fitted

with oil/water separator

25 Fire extinguishing system

Smoke alarm system with central alarm at monitoring

panel and sensors in all accommodation cabins

(including crew), galley/mess, saloon and bilge spaces.

Heat detection in garage and engine room

Manual FM200 system for engine room and garage

(separate systems)

Manual shutdown switches for engines, generators,

engine room fans and air intake dampers

12 x portable fire extinguishers installed for immediate use

1 x portable CO₂ fire extinguisher in engine room

26 Underwater gear

Bow thruster, hydraulic engine driven – 50hp

(within a watertight compartment)

Stern thruster, hydraulic engine driven – 50hp

Seawater strainers x 2 main engines and 2 x generators

Cathodic protection provided by cross bonded zinc anodes

Hydraulic trim tabs heavy duty (stainless steel)

Antifouling

Twin shaft option:

V-Drive through fixed shafts and tunnels

70mm Temet 25 propeller shafts

High performance bronze rudders

Bronze (MB2) P brackets

Self aligning shaft seal including spare seal

NAB 5-blade propellers

Triple Arneson option:

Direct gear drive through Arneson surface

drives (ASD16)

NAB 5 blade propellers

27 Electrical system

The electrical system of the boat is European, 380v

3 phase 50Hz, giving a single phase voltage of 220v

or

The electrical system of the boat is USA, 208v

3 phase 60Hz, giving a single phase voltage of 110v

Shore supply will be provided via a single 100 amp

3 phase connection, this will feed the on-board power

system through an:

Isolation transformer (limiting fluctuations in

shorepower voltage to +/- 4 per cent)

A semi automatic power management system provided

which configures the distribution system according

to the available power sources. Load protection is by

magnetic circuit breakers and residual current devices

at 300mA

Glendinning Cablemaster system and remote control

for shorepower (1 X 100 amp)

Main engine and generator start batteries are heavy

duty valve-regulated lead-acid types

Batteries for 12v and 24v domestic loads are deep

cycle valve regulated lead acid types

Batteries for console loads are Optima yellow top,

spiral gel, deep cycle types

Telephone and television dockside connection

Remote battery isolating switches

2 x 24v 95 amp battery chargers

1 x 80 amp combi/charger

1 x 12v 40 amp battery charger

Emergency battery cross connection system

Engine room fans

AC engine room and bilge lights

TV antenna and circuit (Glomex)

28 Hot water system

1 x AC hot water circulating pump

28mm diameter piping (insulated) arranged as

a ring main throughout the lower deck

Standard bore lines to all accommodation, galley

and external faucets

Expansion tank (60 litre)

2 x 150 litre hot water cylinders, each fitted with

2 x 2kW immersion heaters and drain down facility

29 Fresh-water system

1 x AC fresh-water pressure system

1 x 24v DC fresh-water pressure system

Accumulator tank (25 litre)

28mm diameter piping arranged as a single line

throughout the lower deck

Standard bore lines to all accommodation, galley

and external faucets

1 x drinking water purifier supplying drink water

faucets for galley and wetbars plus icemakers

(Seagul Spark L-Pure water micro filter system)

Shore connection with pressure regulator

30 Black-water system

Tecma toilet system (DC) turbine pump discharging

to black-water tank with tank full indication

Black-water tank (GRP) with level indication at

monitoring panel

Black-water tank to be fitted with permanently open

vent lines to port and starboard

Manual tank overboard discharge (2 x DC discharge

pumps) or to dockside fitting

31 Grey-water system

Washbasins and showers draining to main

grey-water tank

Grey-water tank to be fitted with permanently

open vent lines to port and starboard

Air-conditioning units draining to auxiliary

sump box (whale)

Master stateroom and crew areas to drain to auxiliary

sump boxes (whale)

Grey-water tank with automatic pump out (2 x DC

discharge pumps) and tank full warning light at

monitoring panel

Sump boxes with automatic pump out

32 Air-conditioning system

Chilled water air-conditioning system with reverse

cycle heating, comprising:

Seawater pump and strainer

3 x 6 ton single stage MCW chillers

Chilled water pump

Air handlers supplying cold or hot air to each

accommodation cabin

Condensate drains from air handlers draining to

dedicated sump box

Elite controls for each cabin

All ducting together with return and supply air

grills will be sized in accordance with Marine Air

recommendations

33 Safety equipment

16 x adult life jackets

1 x regulation first aid kit

1 x signal flare kit

2 x life rings

2 x 8 man liferafts (non SOLAS approved)

34 Boat covers

Aft cockpit overall seating covers

Aft cockpit table cover

Aft cockpit bar stool covers

Windscreen cover

Foredeck seating and sunpad cover

Deck saloon dining table cover

Helm seat covers

35 Miscellaneous

1 x set Egyptian cotton sheets consisting of mattress

protector, 1 x fitted bottom sheet, 1 x flat top sheet,

1 x Oxford style and 1 x housewife pillowcase

per person

1 x set of towels per person

10 x large fenders with ties

3 x 20m black docking lines

2 x 15m black docking lines

1 x 10m black docking line

Spares kit

Vacuum cleaner

Sunseeker boat mat

Mosquito screens for all openable portlights

RINA compliance kit consisting of: 300mm bell, 2 x

buckets with lines (engine room), CO₂ fire extinguisher

(engine room), axe (engine room), fire blanket (galley),

Fire extinguishers (portable in each cabin)

*Every attempt has been made to give accurate information, but performance and range figures are estimates given as a guide only. Dirt or growth on the hull, tuning of the engines, size, make of engines fitted, damage to propellers, the temperature of the air and water, the weight of fuel, water, stores, number of people, propeller pitch, quality of fuel and other matters, can all affect a boat's performance and range. For these and other reasons we can give no performance, range or other guarantees, and neither such guarantees nor anything contained herein constitutes an offer of contract or any representation or agreement, or may otherwise be relied upon. The photographs and artist's impressions in this brochure are of existing models in the Sunseeker range. There may be items shown in these photographs and artist's impressions that are not included in the standard inventory of the models shown. Specifications contained on the web site are samples only and should not be relied upon and may refer to models only intended for sale in a particular territory and not generally. No guarantee is given that any model will be available in any territory, however by contacting us we can advise you of models that are likely to be available in each territory. Actual specifications will be provided when a sales order or enquiry is placed with us or our approved Sunseeker dealer.

Specifications for models sold in different markets may vary and specifications and models may be changed or withdrawn at any time without prior notice. The individual specification for each vessel will be agreed as part of the sale contract between the purchaser and the Sunseeker dealer. Dealers and distributors are independently owned and operated entities, and therefore Sunseeker dealers and distributors are not owned by Sunseeker International Limited or any subsidiaries or other related entity of this company nor are they their agents. Therefore they have absolutely no authority to commit Sunseeker International Limited, or any subsidiary or other related entities of Sunseeker International Limited to any pledge, contract or agreement in any form or by any means unless first accepted in writing by Sunseeker International Limited. In some examples herein Sunseeker have referred to measurements, specifications or other details applicable to a particular territory and no guarantee is given that these are applicable to your territory. For ease of reference we have, in some cases, referred to "we" or "Sunseeker" and these terms should be taken to mean Sunseeker International Limited.



Krüger Werft AG
Ländlistrasse 28
CH-8274 Gottlieben
Tel. +41(0)71 6691269
info@krueger-werft.ch

Awards

Sunseeker's success over the years is clearly underlined by the following list of national and international awards and achievements.

2008	UK Motor Boat of the Year Awards 2008	Manhattan 60	2001	Best Power Interior Award	105 Yacht, The Superyacht Society
2007	European Powerboat of the Year	Superhawk 43	2001	President's Award	Southern California Marine Association
2007	Asia Pacific Boating Awards	90 Yacht, Best of the Best	2000	Queen's Award for Enterprise	Continuous innovation and development
2007	Modern Boating Magazine 2007	Portofino 47, Imported Powerboat of the Year	2000	The Times Exporter of the Year	Times Export Awards
2007	Australian Marine Industries Federation Awards	Predator 62, Imported Powerboat of the Year	2000	Robb Report Award	Best of the Best, Boating and Sailing
2007	Nominated by The Superyacht Society	37 Metre Yacht 'The Snapper'	1999	Robb Report Award	Best of the Best, Boating and Sailing
2007	Queen's Award for Enterprise	International Trade	1999	Motorboat of the Year	Predator 75, BT British Nautical Awards
2006	Nominated for three Superyacht Awards	Predator 108 'SHIVER'	1998	Superyacht Design Award	Manhattan 74, Superyacht Design Awards
2005	Australian Marine Industries Federation Awards	75 Yacht, Non-Trailable Boat Award	1998	Editor in Chief Awards	Yachts Magazine
2005	Australian Marine Industries Federation Awards	Portofino 46, Commendation	1997	Lifetime Achievement Award	Robert Braithwaite MBE, RYA Awards
2005	Modern Boating, Power Boat of the Year Awards	Predator 68, Imported Powerboat of the Year	1996	Motorcruiser of the Year Award	RYA British Nautical Awards
2005	Boats.com Marine Industry Web Awards	Manufacturers Category for www.sunseeker.com	1996	Exporter of the Year Award	DCCI Export Awards
2004	Sydney Boat Show 2004	Best Overall Display	1995	Boat Builder of the Year Award	RYA/BMIF British Nautical Awards
2004	Sydney Boat Show 2004	Best Marina Display	1994	Queen's Award for Export Achievement	Queen's Awards for Industry
2003	Australian Marine Awards	Manhattan 56, Award for Excellence	1992	Best in the World Award	Renegade 60, Boating Magazine
2003	Australian Marine Awards	Predator 68, Best Imported Non-Trailable Yacht	1990	Exporter of the Year	SW International Business Awards
2002	Entrepreneur of the Year Award	Robert Braithwaite MBE	1989	Queen's Award for Export Achievement	Queen's Awards for Industry
2001	Best Power Design Award	105 Yacht, The Superyacht Society	1987	Queen's Award for Export Achievement	Queen's Awards for Industry

*Every attempt has been made to give accurate information, but performance and range figures are estimates given as a guide only. Dirt or growth on the hull, tuning of the engines, size, make of engines fitted, damage to propellers, the temperature of the air and water, the weight of fuel, water, stores, number of people, propeller pitch, quality of fuel and other matters, can all affect a boat's performance and range. For these and other reasons we can give no performance, range or other guarantees, and neither such guarantees nor anything contained herein constitutes an offer of contract or any representation or agreement, or may otherwise be relied upon. The photographs and artist's impressions in this brochure are of existing models in the Sunseeker range. There may be items shown in these photographs and artist's impressions that are not included in the standard inventory of the models shown. Specifications contained on the web site are samples only and should not be relied upon and may refer to models only intended for sale in a particular territory and not generally. No guarantee is given that any model will be available in any territory; however by contacting us we can advise you of models that are likely to be available in each territory. Actual specifications will be provided when a sales order or enquiry is placed with us or our approved Sunseeker dealer. Specifications for models sold in different markets may vary and specifications and models may be changed or withdrawn at any time without prior notice. The individual specification for each vessel will be agreed as part of the sale contract between the purchaser and the Sunseeker dealer. Dealers and distributors are independently owned and operated entities, and therefore Sunseeker dealers and distributors are not owned by Sunseeker International Limited or any subsidiaries or other related entity of this company nor are they their agents. Therefore they have absolutely no authority to commit Sunseeker International Limited, or any subsidiary or other related entities of Sunseeker International Limited to any pledge, contract or agreement in any form or by any means unless first accepted in writing by Sunseeker International Limited. In some examples herein Sunseeker have referred to measurements, specifications or other details applicable to a particular territory and no guarantee is given that these are applicable to your territory. For ease of reference we have, in some cases, referred to "we" or "Sunseeker" and these terms should be taken to mean Sunseeker International Limited.

Designed, written and produced by Marketing Matters Limited. Printed in England. August 2008. ©Sunseeker International.

Naval architects
Don Shead/Sunseeker Design

Exterior styling
Sunseeker Design

Interior design
Sunseeker Design

Builder
Sunseeker International



Sunseeker International Limited has
CE Approval which is compulsory
for all boats with a LOA of 24m and
below when sold in the EU.