

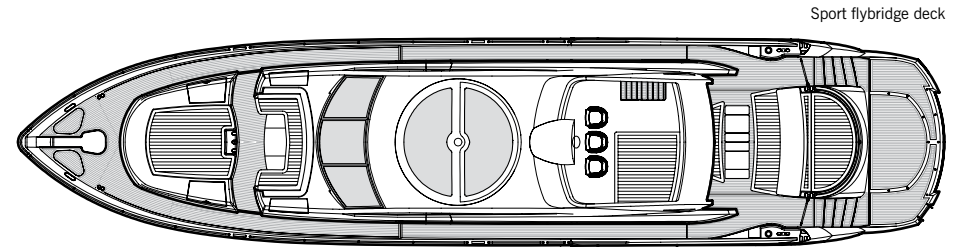
PREDATOR 92 SPORT

STYLE: PERFORMANCE MOTORYACHT

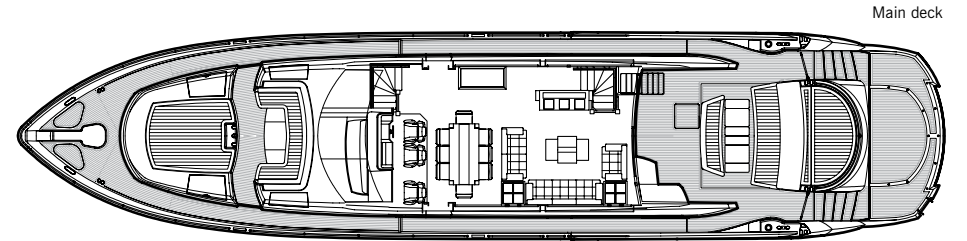
ACCOMMODATION: UP TO 8 GUESTS AND 4 CREW MEMBERS

PERFORMANCE: UP TO 35 KNOTS

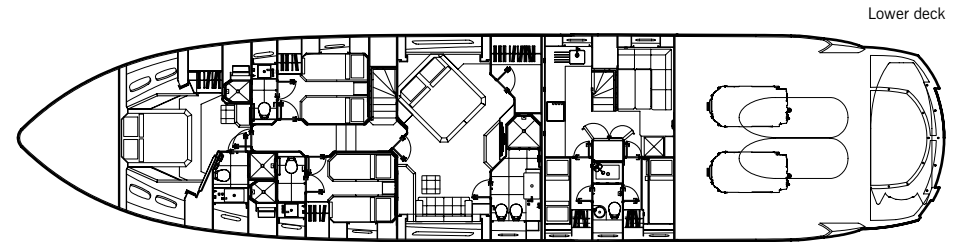
UNIQUELY POSITIONING THE PREDATOR 92 SPORT WITHIN THIS RANGE, A SLEEK FLYBRIDGE AS STANDARD HAS BEEN INCORPORATED WITHOUT BREAKING THE SERIES' DISTINCTIVE STYLING. OF COURSE, THE HELM STATION BELOW REMAINS THE NERVE CENTRE OF OPERATIONS, BUT THIS ADDITION IS A GOOD RESULT, BOTH IN TERMS OF DESIGN ACHIEVEMENT AND EXTENDING ENJOYMENT FOR HELM AND COMPANIONS SHOOTING THE BREEZE FROM UP HIGH. ON THE LOWER DECK THERE ARE OPTIONAL ARRANGEMENTS INCLUDING A CENTRAL OR CORNER-BEDDED FULL BEAM MASTER STATEROOM. THE ACCOMMODATION SPACE AFT OF THE ENGINE ROOM CAN BE VARIOUSLY PLANNED FOR CREW AND/OR WORKSHOP PLUS LAUNDRY, OR AS PRIVATE QUARTERS.



Sport flybridge deck



Main deck



Lower deck

Other layout options available

PRINCIPAL CHARACTERISTICS

Length overall – (incl. platform and pulpit)	28.15m	92'4"
Length waterline – (@ half load)	20.99m	68'10"
Beam – (maximum)	6.34m	20'10"
Height above waterline – (@ light load)	6.50m	21'4"
Draft – (maximum @ full load)	1.98m	6'6"
Displacement – (@ half load)	68400kg	150480lb
Fuel capacity	8500 litres	1870 GB gal. 2245 US gal.
Fresh-water capacity	1500 litres	330 GB gal. 396 US gal.
Propulsion	Twin FP props in semi-tunnels	

Engine options	up to 4868 PS (total)
Fuel options	Diesel
Generators	2 x 23kW @ 50Hz (Euro) 2 x 28kW @ 60Hz (US)
Maximum speed	up to 35 knots*
Cruising speed	up to 23 knots*
Range	up to 450 nautical miles*

All principal characteristics and specifications are provisional.



PREDATOR 92 SPORT

PRINCIPAL FEATURES

Built to European specification 220v single phase 50Hz
or
Built to USCG Regulations 220v/110v single phase 60Hz

Foredeck with seating and sunbathing area
Mini flybridge area with helm position
Garage for optional tender and jet bike
Fixed bathing platform
Hot and cold swim shower
Wetbar with ice maker, cool chest, sink and ceramic griddle
Radar, chartplotter and GPS navigator
Autopilot
Power-assisted steering
Electronic speed log, depth sounder and VHF radio
Trim tabs
Hydraulic bow thruster (30hp)
Hydraulic stern thruster (30hp)
Flatscreen TVs in all guest cabins and crew mess
Surround sound system for deck saloon and aft master stateroom
Ceramic hob, microwave combination oven, refrigerator, freezer
and slimline dishwasher
Hot and cold water system
Automatic fire extinguishing system for engine room
Automatic bilge pumps
Slow speed generators with underwater silent exhaust
AC shore power/battery charger
All cabin air-conditioning
Remote control spotlight
Electric winch with foredeck control
Toilet system with holding tank
Fresh-water marina connection
Teak cockpit, bathing platform and steps
Teak side decks
Crew quarters
Antifouling

All items included in standard specification.

US specification includes:
Upgraded generators
US Coast Guard build regulations
US specification appliances

1. Helm station
2. The Predator 92 Sport
3. The Predator 92 Sport
4. Main deck saloon
5. Forward stateroom
6. Owner's stateroom

STANDARD SPECIFICATIONS

1 Construction

Gel coat including stripes
Vinylester skin coat with powder bound mat
Stitched multi axial single skin hull bottom
Balsa and PVC foam cored hull topsides skinned
with stitched multi axials
PVC foam cored deck
Longitudinally stiffened with foam formers over
laminated with stitched multi axials
Transversely stiffened with GRP ring frames, marine
ply and sandwich bulkheads
Superstructure PVC foam cored and skinned with
stitched multi axials
Superstructure stiffened with foam formers over
laminated with stitched multi axials

2 Deck

Fittings all in 316 stainless steel and chromed bronze
Pair stainless steel bow cleats and fairleads
Three pairs of stainless steel spring cleats with
chafing bars
Pair stainless steel stern cleats and fairleads
Stainless steel pulpit and cockpit rails
Stainless steel bow roller with anchor stop and devil's claw
Stainless steel bow plate
Single electric windlass (Lewmar V8) 24v, starboard side,
foredeck control only
Single electric capstan (Lewmar C4) 24v, port side,
foredeck control only
Anchor 80kg claw-type (galvanised)
Anchor chain 100m/328 feet (12mm diameter,
galvanised)
Automatic fresh-water chain wash
Electric winch including warping drum with
foredeck controls
Fresh-water deckwash with outlets forward and aft
Chain locker and fender stowage
Curved direct glazed safety glass windscreen
Pantograph windscreen wipers and washers
Fuel filler on port and starboard sides
Fresh-water filler
IMCO navigation lights
Remote controlled spotlight at bow
Low level courtesy lights on side decks 24v
Bow seat and sunbathing pad
Built in U shaped seating area foredeck
Table for U shaped seating area at foredeck
Skylight from VIP Stateroom
Teak laid sidedecks

3 Aft cockpit

Teak laid self draining cockpit floor
Stairs to flybridge on starboard side with teak treads
Aft bench seating
Aft facing bench seat
Teak tables with folding leaves on GRP base
Aft sunpad
Wetbar on port side with sink
Refrigerator in wetbar
Ice maker in wetbar
Electric ceramic griddle AC in wetbar
Stainless steel stern safety gates
Engine room access hatch
2 x stern capstan winches (Lewmar C4) 24v and fairleads
Hydraulic telescopic gangway
Overhead cockpit lights 24v
Low-level courtesy lights 24v
Two pairs marine speakers connected to flybridge CD
radio system in deck saloon
Ensign staff and socket
Battery switches in locker
Fire extinguisher in locker
Sliding patio doors leading to deck saloon

4 Bathing platform and stern garage

Teak laid fixed platform
Stairs to aft cockpit with teak treads
Fold out stainless steel swimming ladder
Hot and cold hand held swimming shower
Fresh-water marina connection
Telephone marina connection
Dockside AC connection 1 x 100 amp
Glendinning Cablemaster
Hydraulically opening garage door with access
to stern garage
Crane inside garage to launch and recover tender

5 Flybridge deck

Stairs leading from aft cockpit
Self draining cockpit with non slip finish
Acrylic deflecting spray screen
Forward sunpad
Stainless steel aft safety rails
Low level flybridge lighting 24v
Two pairs marine speakers connected to CD radio
in deck saloon
Deckwash outlet
Radar arch structure

6 Flybridge helm position

3 x individual helm seats
Hydraulic steering
Duplicate engine throttle controls
Combined depth and speed display (Simrad IS20)
VHF radio handset (Simrad RS87 tri-station)
Manual compass
Rudder indicator
Trim tab control
Horn control
Radio CD waterproof remote keypad
Waterproof plug and socket 12v

7 Boat covers

Windscreen sun screen
Flybridge instrument cover

8 Deck saloon

Sofa seating area
Coffee table
2 x side tables in seating area
Bar peninsular unit
LCD flatscreen TV on rise and fall (42")
DVD/CD/radio surround sound entertainment system
I-Pod docking station connected to AV system
Control head for flybridge CD/radio system
Air-conditioning
Side windows with blinds
Drinks cabinet with glassware storage for eight
(8 x Champagne, 8 x whisky, 1 x decanter)
Stainless steel framed sliding patio door to aft cockpit
with curtains and tie back
Halogen overhead lighting 24v
Double AC sockets
Telephone point
Table lamp
Dining table
Eight free-standing dining chairs
Sensor connected to fire detection system
Fitted carpet
Skylights in forward overhead area
Side opening door to port side deck
Side opening door to starboard side deck
Staircase aft leading to crew quarters
Staircase forward leading to accommodation area

4

5

6

9 Lower helm position

Three helm seats
Chart stowage area
Double AC sockets
Telephone points x 2
Console with dash panels
Hydraulic power steering
Carbon fibre effect steering wheel
Radar/chartplotter with GPS
(2 x Furuno NavNet vx2 displays)
Autopilot (Simrad AP28)
Depth and speed displays (Simrad IS20)
VHF radio handset (Simrad RS87 tri-station)
Manual compass
Horn control
Monitoring panel including generators control
Monitoring panel for fire detection system
Trim tab controls
Rudder indicator
Analogue engine instrumentation
Fresh-water gauge
Fuel gauge
12v socket
Remote spotlight control
Windscreen wipers with washers
Screen demister
Fire extinguisher

10 Lower deck lobby

Staircase leading from deck saloon
Halogen overhead lighting 24v
AC socket
Bilge access hatches
Doors to guest cabins
Fitted carpet
Sensor connected to fire detection system
LED feature downlighting
Feature corner glass

11 Forward VIP stateroom

Double berth
Foam mattress for berth
Drawers in berth
Bedside lights
Dressing table
Stool for dressing table
Air-conditioning
LCD flatscreen TV (42")
DVD/CD player with speakers
Halogen overhead lighting 24v
Fixed portlights
Skylight with blind
Double AC sockets
Telephone point x 2 (port bedside and dressing table)
Fitted carpet
Sensor connected to fire detection system
Doors to en suite and lobby

12 Forward VIP en suite

Tecma toilet 24v
Vanity top and flooring
Washbasin
Taps and accessories (toothbrush and glass holder, soap dispenser, towel rails and towels)
Separate shower compartment
Acrylic shower door
Extractor fan
Air-conditioning outlet
Mirror
Shelved cupboard
Halogen overhead lighting 24v

Opening porthole with mosquito screen and Venetian blind
Shaver socket 240/110v
Door to stateroom

13 Port guest cabin

Two single berths
Foam mattresses for berths
Stowage under berths
Bedside lights
Bedside unit with storage
Wardrobe
Air-conditioning
Halogen overhead lighting 24v
Opening portholes with mosquito screen and blind
Double AC sockets
LCD flatscreen TV (19")
DVD/CD player with two speakers
Telephone point (beside bedside unit)
Fitted carpet
Sensor connected to fire detection system
Doors to en suite and lobby

14 Port guest en suite

Tecma toilet 24v
Vanity top and flooring
Washbasin
Taps and accessories (toothbrush and glass holder, soap dispenser, towel rails and towels)
Separate shower compartment
Acrylic shower door
Extractor fan
Air-conditioning outlet
Mirror
Shelved cupboard
Halogen overhead lighting 24v
Opening porthole with mosquito screen and venetian blind
Shaver socket 240/110v
Door to guest cabin

15 Starboard guest cabin

Two single berths
Foam mattresses for berths
Stowage under berths
Bedside lights
Bedside unit with storage
Wardrobe
Air-conditioning
Halogen overhead lighting 24v
Opening portholes with mosquito screen and blind
Double AC sockets
LCD flatscreen TV (19")
DVD/CD player with two speakers
Telephone point (beside bedside unit)
Fitted carpet
Sensor connected to fire detection system
Doors to en suite and lobby

16 Starboard guest en suite

Tecma toilet 24v
Vanity top and flooring
Washbasin
Taps and accessories (toothbrush and glass holder, soap dispenser, towel rails and towels)
Separate shower compartment
Acrylic shower door
Extractor fan
Air-conditioning outlet
Mirror
Shelved cupboard
Halogen overhead lighting 24v
Opening porthole with mosquito screen and Venetian blind

Shaver socket 240/110v
Door to guest cabin

17 Master aft stateroom

Double berth
Foam mattress for berth
Drawers in berth
Bedside units with storage
Bedside lights
Dressing table
Foot stool for sofa/dressing table
Sofa
Air-conditioning
Halogen overhead lighting 24v
Table lamps x 2
Fixed and opening portholes (with mosquito screens) with blinds
Double AC sockets
Telephone points x 2 (dressing table and starboard bedside)
LCD flatscreen TV (42")
DVD/CD/radio entertainment system with two speakers and sub woofer (Bose 321)
Fitted carpet
Sensor connected to fire detection system
Doors to en suite, walk in wardrobe and lobby

18 Master walk-in wardrobe

Hanging rails
Drawers
Shelves
Full-length mirror
Halogen overhead lighting 24v
Opening porthole with mosquito screen and blind
Fitted carpet
Door to stateroom

19 Master en suite

Tecma toilet 24v
Bidet
Vanity top and flooring
Washbasin
Taps and accessories (toothbrush and glass holder, soap dispenser, towel rails and towels)
Separate shower compartment
Acrylic shower door
Extractor fan
Air-conditioning outlet
Mirrors
Halogen overhead lighting 24v
Opening porthole with mosquito screen and Venetian blind
Shaver socket 240/110v
Door to stateroom

20 Galley and crew mess

Stairs leading from deck saloon
Safety flooring
American style fridge, freezer with ice maker AC
Four ring ceramic hob AC
Hob extractor AC
Slimline dishwasher AC
Washer/dryer AC
Stainless steel sink
Tap with hot and cold water
Rubbish bin
Chinaware with stowage (8 settings)
Cutlery (8 settings)
Storage consisting of cupboards, drawers and top-box lockers
Halogen overhead lighting 24v
Lighting under top box lockers
Double AC sockets

Telephone point
Fire extinguisher
Fire blanket
First aid kit
Sensor connected to fire detection system
Sofa seating area
Table with folding leaf
LCD flatscreen TV (19")
DVD/CD player with two speakers
Doors leading to crew cabins
European specification only: Microwave/oven AC
USA specification only: Oven AC
USA specification only: Small microwave AC

21 Aft port crew cabin

Twin bunk berths with foam mattresses
Air-conditioning
Halogen overhead lighting 24v
Double AC socket
Telephone point
Bedside lights
Opening porthole with mosquito screen and curtains
Radio/CD player with two speakers
Fitted carpet
Sensor connected to fire detection system
Door to galley/crew mess and crew en suite

22 Forward port crew cabin

Twin bunk berths with foam mattresses
Air-conditioning
Halogen overhead lighting 24v
Double AC socket
Telephone point
Bedside lights
Opening porthole with mosquito screen and curtains
Radio/CD player with two speakers
Fitted carpet
Sensor connected to fire detection system
Door to galley/crew mess and crew en suite

23 Crew en suite

Tecma toilet 24v
Washbasin
Shower cubicle
Mirror
Vanity unit
Halogen overhead lighting 24v
Shaver socket 240/110v
Doors leading to crew cabins

24 Engine compartment and ancillaries

Soundproofing throughout
Fuel filters/water separators to engines
Fuel filters/water separators to generators
FM200 manual/automatic fire extinguishing system combined with engines, generators and fans shutdown.
2 x extractor fans AC
Automatic bilge pumps combined with high level alarm
Strainers to all raw water inlets
Sensor connected to fire detection system

25 Electrical system

European specification only: 2 x 23kW slow speed Kohler generators with underwater silent exhaust
USA specification only: 2 x 28kW slow speed Kohler generators with underwater silent exhaust
Dockside AC connection 1 x 100 amp Glendinning Cablemaster
24v and 12v DC electrical system with full circuit breaker protection
2 x generator batteries 12v circuit

4 x domestic batteries 24v circuit
8 x engine batteries 24v circuit
Alternator split charging system
Remote battery switches controlled from locker in cockpit
95 amp battery charger for 24v circuit
20 amp battery charger for 12v circuit
2 x 2kW immersion heaters for each calorifier
AC sockets throughout the boat
Fire detection system with monitoring panel beside lower helm

26 Underwater gear

5 blade NAB bronze propellers
Bronze (MB2) P brackets
90mm Temet 25 propeller shafts
Self aligning shaft seal with spare seal
High performance bronze rudders and struts
Seacocks on all underwater fittings
Full cathodic bonding system to zinc anodes
Hydraulic bow thruster (30hp sequential operation)
Hydraulic stern thruster (30hp sequential operation)
Hydraulic trim tabs
Antifouling

27 Systems

Hydraulic power steering 24v
Electric toilet system (Tecma 24v) with two switch control
Toilets discharging overboard or to black-water tank
Black waste water tank discharging to dockside or overboard (24v) macerator pump
Washbasins, showers, air-conditioning fans units discharging to grey-water sump
Aluminium fresh-water tank with electric sending unit
Integral GRP fuel tank with electric sending unit
Water pressure system (24v)
Hot water circulating pump AC
2 x 150 litre calorifiers, each with 2 x 2kW immersion heaters
Chilled water air-conditioning system (reverse cycle) AC
Automatic bilge pumping to all watertight compartments combined with high level alarm (24v)

28 Miscellaneous

Toolkit
Retractable boat hook
6 x docking lines (6 x 15m, 20mm diameter, black)
1 x tender line (1 x 10m, 10mm diameter, black)
8 x fenders (F7, 15" x 41", white)
8 x fender lines (8 x 3.5m, 10mm diameter, black)
Stainless steel flagstaff with line
Pennant mast with pennant flag
Mosquito screens for all openable portlights
12 x towel sets
First aid kit
Fire blanket
Deckwash fitting and hose reel
Vacuum cleaner

US specification includes:

Upgraded generators
US Coast Guard build regulations
US specification appliances

*Every attempt has been made to give accurate information, but performance and range figures are estimates given as a guide only. Dirt or growth on the hull, tuning of the engines, size, make of engines fitted, damage to propellers, the temperature of the air and water, the weight of fuel, water, stores, number of people, propeller pitch, quality of fuel and other matters, can all affect a boat's performance and range. For these and other reasons we can give no performance, range or other guarantees, and neither such guarantees nor anything contained herein constitutes an offer of contract or any representation or agreement, or may otherwise be relied upon. The photographs and artist's impressions in this brochure are of existing models in the Sunseeker range. There may be items shown in these photographs and artist's impressions that are not included in the standard inventory of the models shown. Specifications contained on the web site are samples only and should not be relied upon and may refer to models only intended for sale in a particular territory and not generally. No guarantee is given that any model will be available in any territory; however by contacting us we can advise you of models that are likely to be available in each territory. Actual specifications will be provided when a sales order or enquiry is placed with us or our approved Sunseeker dealer.

Specifications for models sold in different markets may vary and specifications and models may be changed or withdrawn at any time without prior notice. The individual specification for each vessel will be agreed as part of the sale contract between the purchaser and the Sunseeker dealer. Dealers and distributors are independently owned and operated entities, and therefore Sunseeker dealers and distributors are not owned by Sunseeker International Limited or any subsidiaries or other related entity of this company nor are they their agents. Therefore they have absolutely no authority to commit Sunseeker International Limited, or any subsidiary or other related entities of Sunseeker International Limited to any pledge, contract or agreement in any form or by any means unless first accepted in writing by Sunseeker International Limited. In some examples herein Sunseeker have referred to measurements, specifications or other details applicable to a particular territory and no guarantee is given that these are applicable to your territory. For ease of reference we have, in some cases, referred to "we" or "Sunseeker" and these terms should be taken to mean Sunseeker International Limited.



Krüger Werft AG
Ländlistrasse 28
CH-8274 Gottlieben
Tel. +41(0)71 6691269
info@krueger-werft.ch

Awards

Sunseeker's success over the years is clearly underlined by the following list of national and international awards and achievements.

2008	UK Motor Boat of the Year Awards 2008	Manhattan 60	2001	Best Power Interior Award	105 Yacht, The Superyacht Society
2007	European Powerboat of the Year	Superhawk 43	2001	President's Award	Southern California Marine Association
2007	Asia Pacific Boating Awards	90 Yacht, Best of the Best	2000	Queen's Award for Enterprise	Continuous innovation and development
2007	Modern Boating Magazine 2007	Portofino 47, Imported Powerboat of the Year	2000	The Times Exporter of the Year	Times Export Awards
2007	Australian Marine Industries Federation Awards	Predator 62, Imported Powerboat of the Year	2000	Robb Report Award	Best of the Best, Boating and Sailing
2007	Nominated by The Superyacht Society	37 Metre Yacht 'The Snapper'	1999	Robb Report Award	Best of the Best, Boating and Sailing
2007	Queen's Award for Enterprise	International Trade	1999	Motorboat of the Year	Predator 75, BT British Nautical Awards
2006	Nominated for three Superyacht Awards	Predator 108 'SHIVER'	1998	Superyacht Design Award	Manhattan 74, Superyacht Design Awards
2005	Australian Marine Industries Federation Awards	75 Yacht, Non-Trailable Boat Award	1998	Editor in Chief Awards	Yachts Magazine
2005	Australian Marine Industries Federation Awards	Portofino 46, Commendation	1997	Lifetime Achievement Award	Robert Braithwaite MBE, RYA Awards
2005	Modern Boating, Power Boat of the Year Awards	Predator 68, Imported Powerboat of the Year	1996	Motorcruiser of the Year Award	RYA British Nautical Awards
2005	Boats.com Marine Industry Web Awards	Manufacturers Category for www.sunseeker.com	1996	Exporter of the Year Award	DCCI Export Awards
2004	Sydney Boat Show 2004	Best Overall Display	1995	Boat Builder of the Year Award	RYA/BMIF British Nautical Awards
2004	Sydney Boat Show 2004	Best Marina Display	1994	Queen's Award for Export Achievement	Queen's Awards for Industry
2003	Australian Marine Awards	Manhattan 56, Award for Excellence	1992	Best in the World Award	Renegade 60, Boating Magazine
2003	Australian Marine Awards	Predator 68, Best Imported Non-Trailable Yacht	1990	Exporter of the Year	SW International Business Awards
2002	Entrepreneur of the Year Award	Robert Braithwaite MBE	1989	Queen's Award for Export Achievement	Queen's Awards for Industry
2001	Best Power Design Award	105 Yacht, The Superyacht Society	1987	Queen's Award for Export Achievement	Queen's Awards for Industry

Naval architects

Don Shead/Sunseeker Design

Exterior styling

Sunseeker Design

Interior design

Sunseeker Design

Builder

Sunseeker International

*Every attempt has been made to give accurate information, but performance and range figures are estimates given as a guide only. Dirt or growth on the hull, tuning of the engines, size, make of engines fitted, damage to propellers, the temperature of the air and water, the weight of fuel, water, stores, number of people, propeller pitch, quality of fuel and other matters, can all affect a boat's performance and range. For these and other reasons we can give no performance, range or other guarantees, and neither such guarantees nor anything contained herein constitutes an offer of contract or any representation or agreement, or may otherwise be relied upon. The photographs and artist's impressions in this brochure are of existing models in the Sunseeker range. There may be items shown in these photographs and artist's impressions that are not included in the standard inventory of the models shown. Specifications contained on the web site are samples only and should not be relied upon and may refer to models only intended for sale in a particular territory and not generally. No guarantee is given that any model will be available in any territory; however by contacting us we can advise you of models that are likely to be available in each territory. Actual specifications will be provided when a sales order or enquiry is placed with us or our approved Sunseeker dealer. Specifications for models sold in different markets may vary and specifications and models may be changed or withdrawn at any time without prior notice. The individual specification for each vessel will be agreed as part of the sale contract between the purchaser and the Sunseeker dealer. Dealers and distributors are independently owned and operated entities, and therefore Sunseeker dealers and distributors are not owned by Sunseeker International Limited or any subsidiaries or other related entity of this company nor are they their agents. Therefore they have absolutely no authority to commit Sunseeker International Limited, or any subsidiary or other related entities of Sunseeker International Limited to any pledge, contract or agreement in any form or by any means unless first accepted in writing by Sunseeker International Limited. In some examples herein Sunseeker have referred to measurements, specifications or other details applicable to a particular territory and no guarantee is given that these are applicable to your territory. For ease of reference we have, in some cases, referred to "we" or "Sunseeker" and these terms should be taken to mean Sunseeker International Limited.

Designed, written and produced by Marketing Matters Limited. Printed in England. August 2008. ©Sunseeker International.



Sunseeker International Limited has
CE Approval which is compulsory
for all boats with a LOA of 24m and
below when sold in the EU.